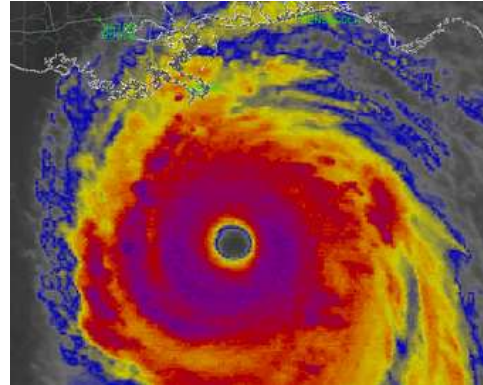




Thor Guard Hurricane Preparation SUPPORT DOCUMENT

SECURING & PROTECTION OF THOR GUARD EQUIPMENT PRIOR TO A HURRICANE



The severity of a hurricane, and its category level, will determine the amount of protection you need to apply to THOR GUARD equipment. Exceptional strong winds will stress construction of the sensor and the horn clusters, causing damage. Also excessive salt spray will alter the dynamics of the design of the Sensor. ***Your judgment will determine the cost and time to remove vs. replacement of any possible damaged components.***

Depending on the THOR GUARD system(s) you have, the appropriate action will need to be taken to permit the system to later be reconnected correctly.

**As a general rule, cutting the sensor cable is not recommended and if done will necessitate the re-soldering of the connection by a qualified individual for the return of proper operation!
This action is a non – warranty situation!**

MODELS L100, L50, L75, & L25

Remove power to the all THOR GUARD equipment. Turn off the UPS. Remove the black cable, (Sensor Cable), and the gray VOTBD cable which are coming from the roof of your facility.

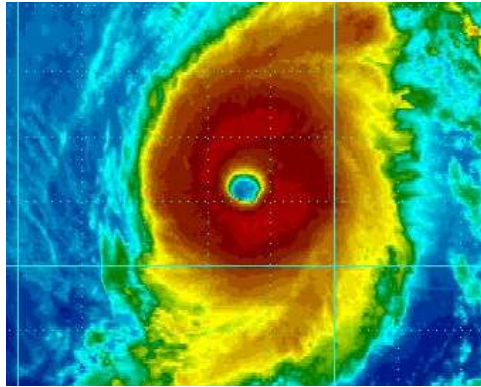
DO NOT CUT THESE CABLES!!!

Remove & secure the sensor and horns on the roof by one of the following methods:

1. Loosen sensor and place in a plastic bag where damage to any parts of the sensor will not occur. See if you can gain access to the cable and locate the sensor in a safe area, otherwise cutting of the sensor cable is the only option. Leave a 6ft. cable at the sensor end.
2. Remove the horns and RF antenna, leaving attached to the mounting pipe.
Remove the RF cable and horn cable from the VOTBD and secure in a safe location
Be certain to turn the transmitter off and disconnect the battery.
3. Determine if the tri-pods and mounting stones need to be disassembled.



Thor Guard Hurricane Preparation SUPPORT DOCUMENT



REMOTE HORNS

Depending on ease of removal, the horns and associate components attached to the mounting pipe need to be removed and stored. The enclosure should be able to withstand the elements. As AC or solar charging maybe not available for an unknown period of time, disconnection of the battery is recommended.

If an AC Powered Remote, place the internal AC switch in the off position and turn the receiver off, and disconnect the battery.

THORGUARDIAN SYSTEMS

1. Disconnect power to gray control box at the AC power plug.
2. Open control box, disconnect battery cables from battery, horn wires, strobe light wires and unplug the sensor cable (black) from the L25. Loosen the black strain relief nut to allow the sensor cable to be removed.
3. If possible bring the entire T-Bar assembly down. If you must cut cables, then allow for 3 – 6ft for splicing and re-connection.

HURRICANE PREPARATION QUESTIONS

THOR GUARD, Inc.

888.571.1212 ext 113 or 106

service@thorguard.com