

ARCHIVING AND VIEWING STORM FILES IN THORPCX

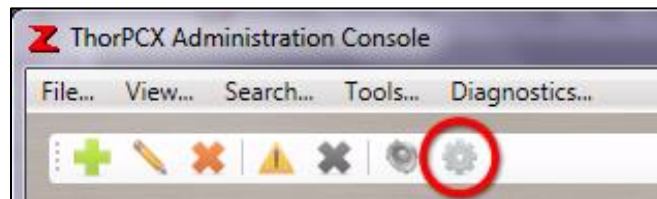
Page 1 – Archive Settings

Page 2 – Sensor Settings

Page 3 – Viewing Archived Data

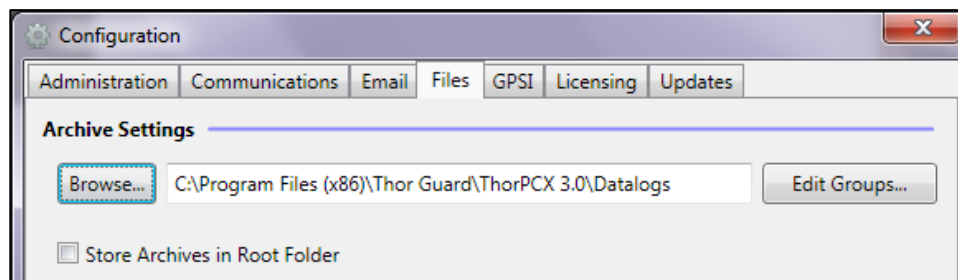
Archive Settings

You can browse to a path where you want to save any storm files that are archived by ThorPCX. Please note that you will need to have the archive function turned on in the sensor's settings page (see the **Sensor Settings** section on the Page 2 to configure that setting). To select a location where the files will be archived, click the small configuration gear wheel icon at the top of ThorPCX (as shown in the image below).



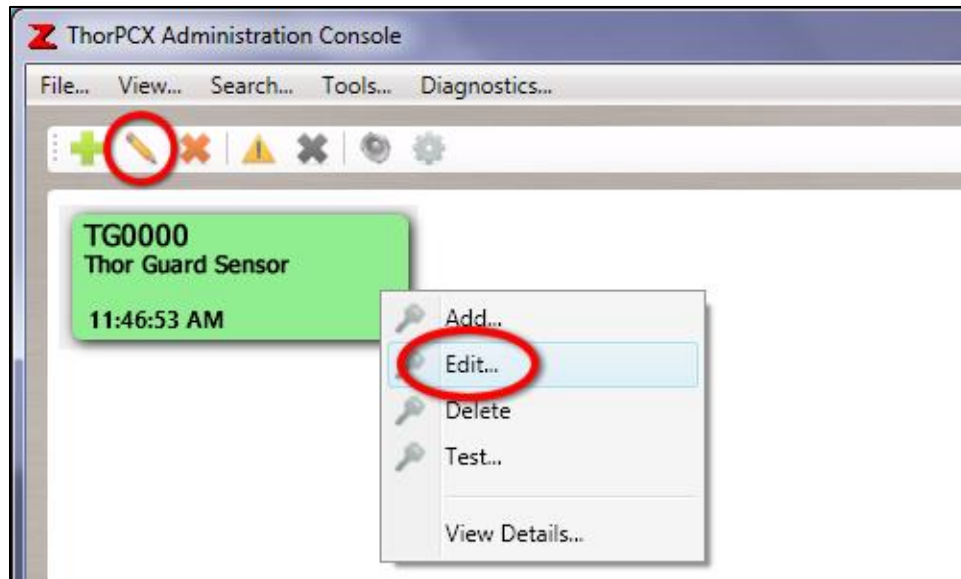
You will then click on the "Files" tab as shown in the image below. Notice the file path displayed in the "Archive Settings" section. This is the path where all storm files will be automatically saved.

IMPORTANT NOTE: You must have an archive setting selected in your sensor's settings or files will not be automatically saved. See the **Sensor Settings** section below to ensure the data is set to be automatically archived.

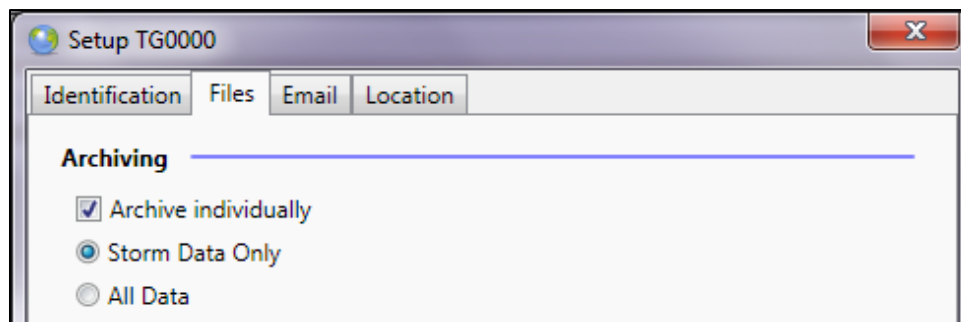


Sensor Settings

Right-click the sensor card on the main console window and select “Edit” from the pop-up menu to open the settings page OR left-click on the sensor to highlight it and click the “Edit” icon (Pencil).



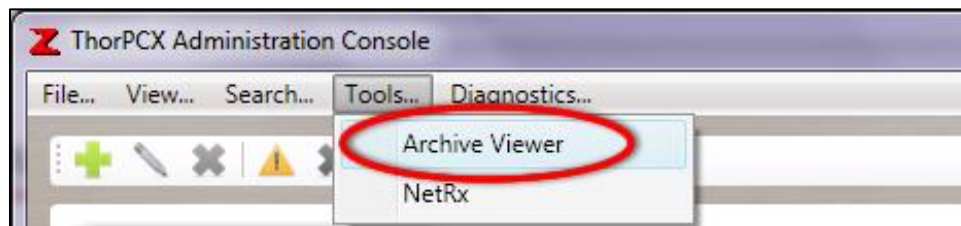
Click on the “Files” tab.



Check the “Archive Individually” box and select whether you want to log “Storm Data Only” (logs data only when a storm occurs) or “All Data” (logs data every second, storm or no storm). Choosing to log “All Data” will result in approximately 30MB of disk space usage per day.

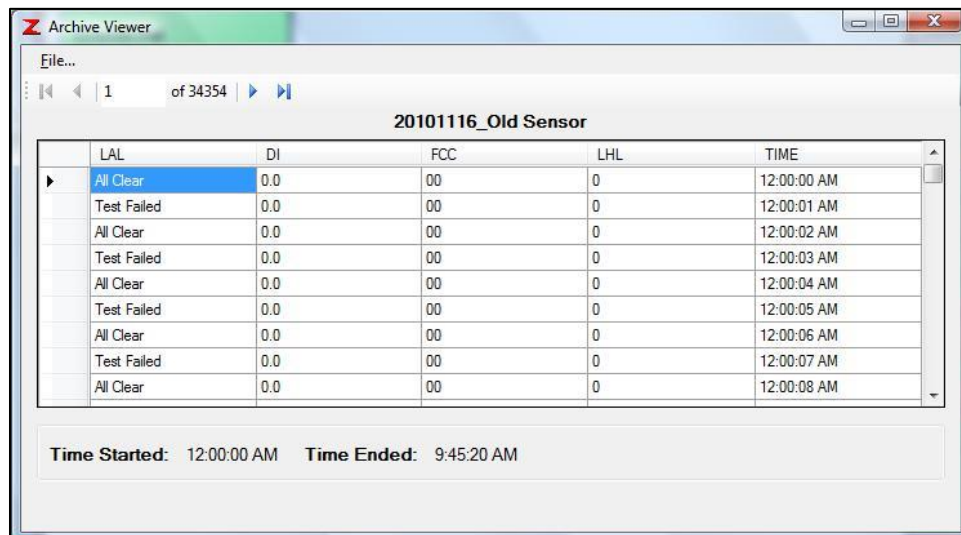
Viewing Archived Data

The Archive Viewer is an application that will allow you to view any of the storm files that have been archived by ThorPCX. Click on the “Tools” menu and then choose the “Archive Viewer” button in the image below to launch the Archive Viewer.



The Archive Viewer shown below will appear. To load an archived storm file, click “File”, then “Open”. Now browse to the location of your storm files, click on a storm file to highlight it, and then click the “Open” button to load the file into the display below. Depending upon the size of the archived storm file, it may take several seconds to load the file. Be patient and allow the Archive Viewer sufficient time to load the file.

IMPORTANT NOTE: If you do not know the location of your archived storm files review the **Archive Settings** section at the top of this document.



Enjoy and let us know if you have any questions or comments. Thank you for choosing Thor Guard and ThorPCX!